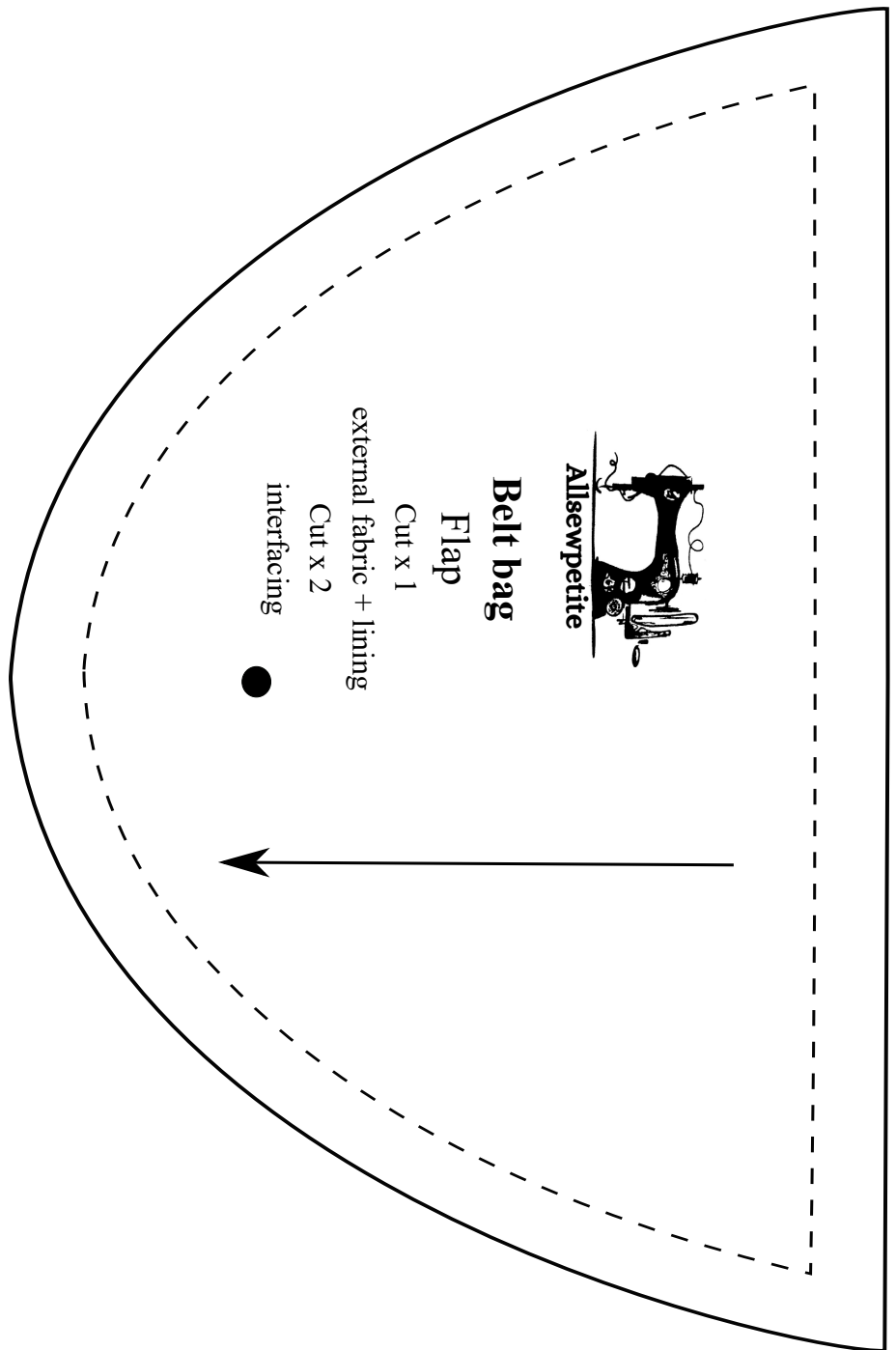


Test me
5 x 5 cm
2 x 2 "



Belt bag
Loop
Cut x 2
external fabric
+ interfacing

1A



Allsewpetite

Belt bag

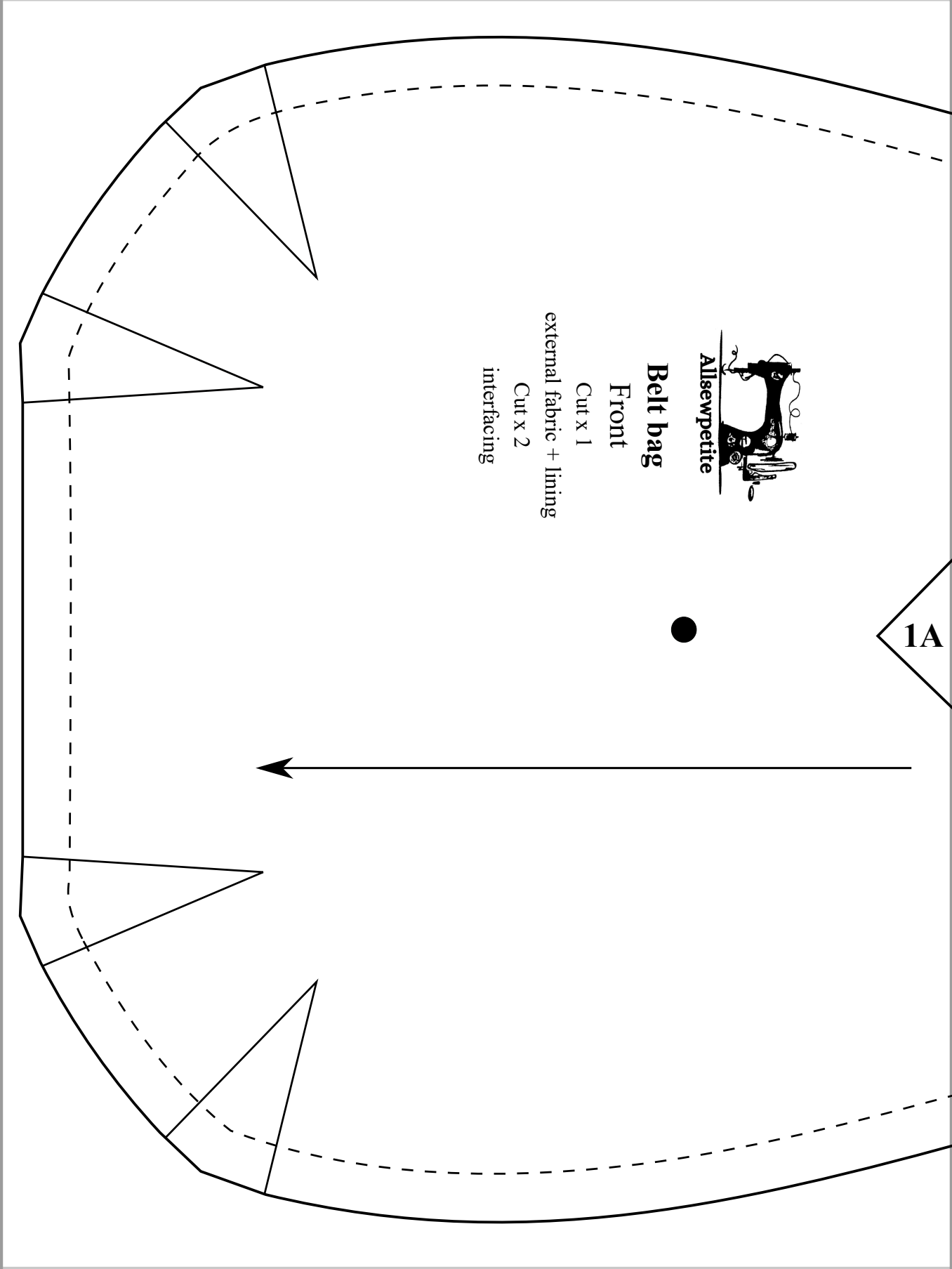
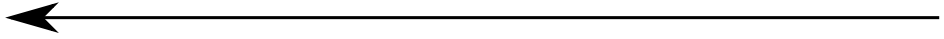
Front

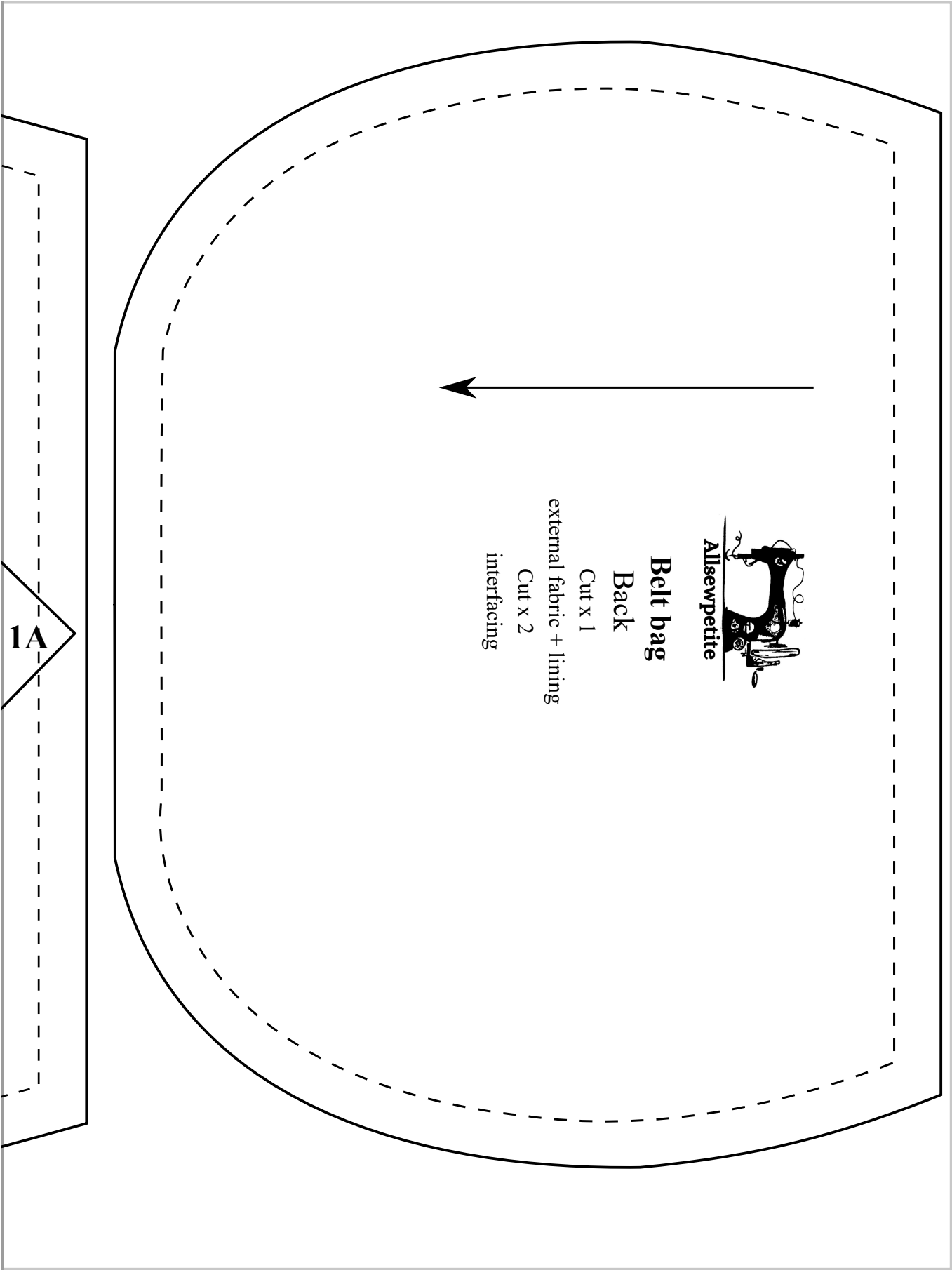
Cut x 1

external fabric + lining

Cut x 2

interfacing





Allsewpetite

Belt bag

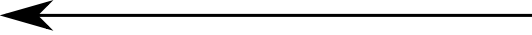
Back

Cut x 1

external fabric + lining

Cut x 2

interfacing



1A