

**Test me  
5 x 5 cm  
2 x 2 "**



**Alisewpette**

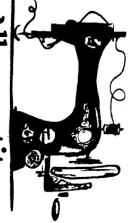
**Peg bag**

**Back panel**

Cut x 1 on fold  
external fabric + lining fabric

Cut x 2

**1A**



**Alisewpette**

**Peg bag**

**Side panel**

Cut x 1 on fold  
external fabric + lining fabric

Cut x 2  
woven interfacing

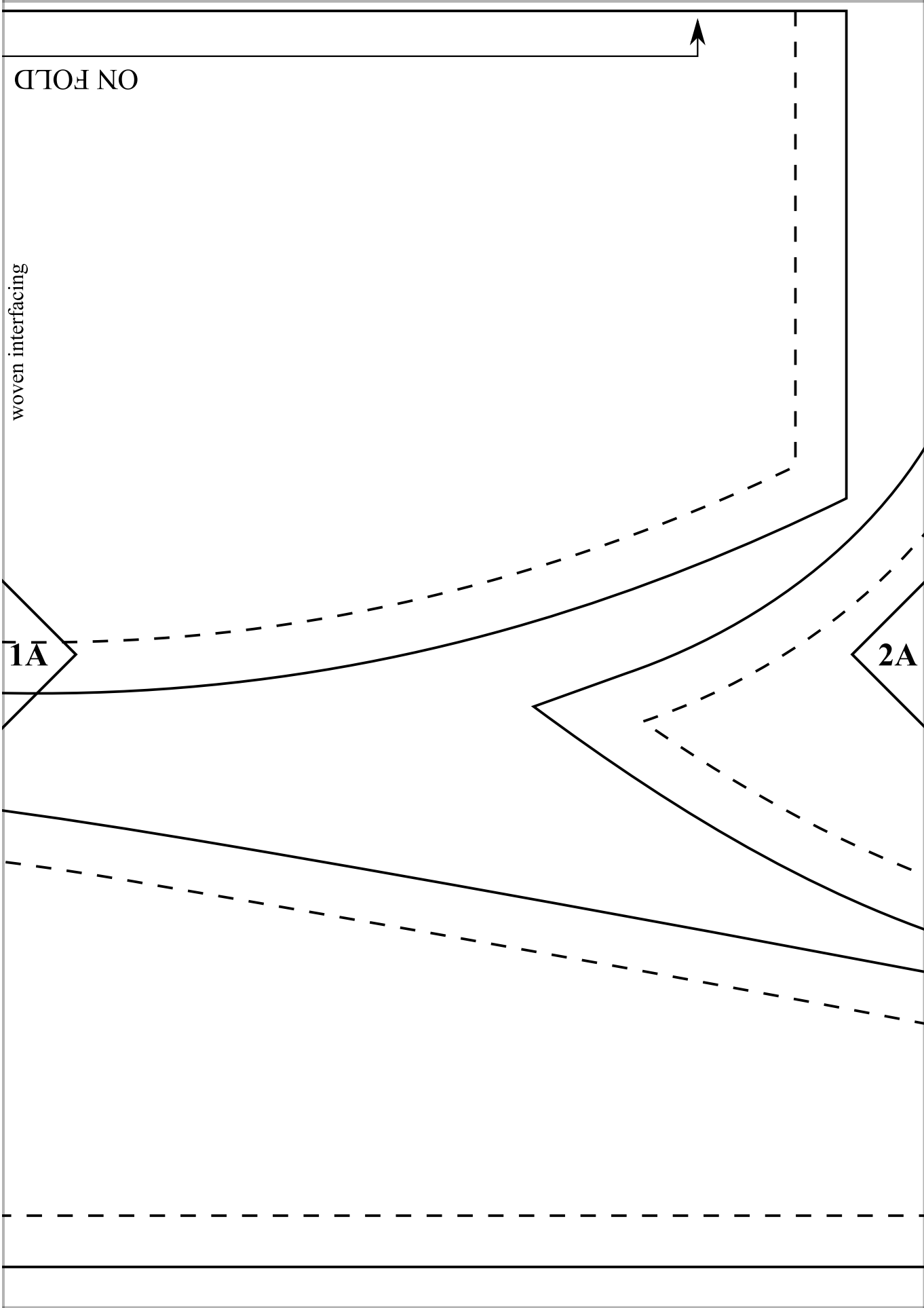
**ON FOLD**

ON FOLD

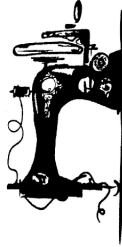
woven interfacing

1A

2A



2A



Alisewpetite

### Peg bag

Front panel

Cut x 1 on fold

external fabric + lining fabric

Cut x 2

woven interfacing

ON FOLD

Gather

