

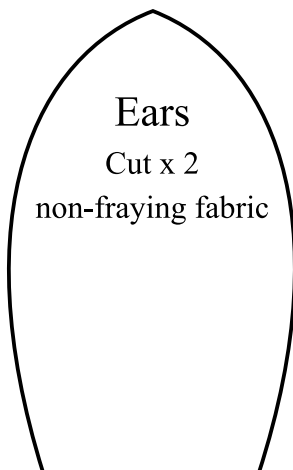
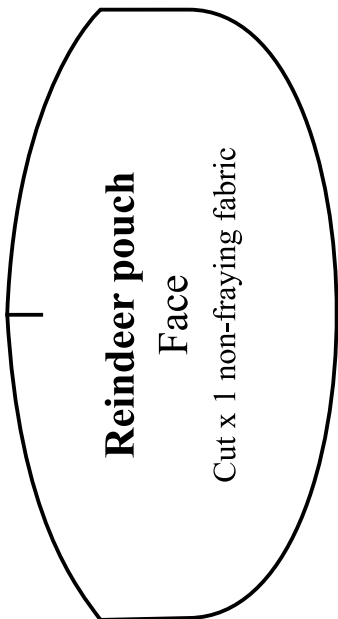
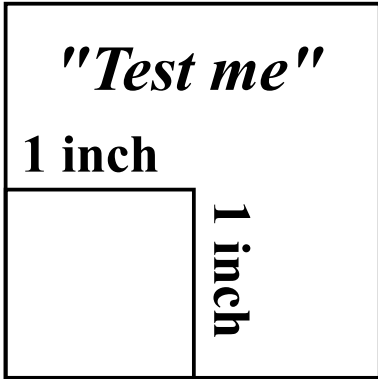
5 cm

*"Test me"*

1 inch

1 inch

5 cm



## Reindeer pouch

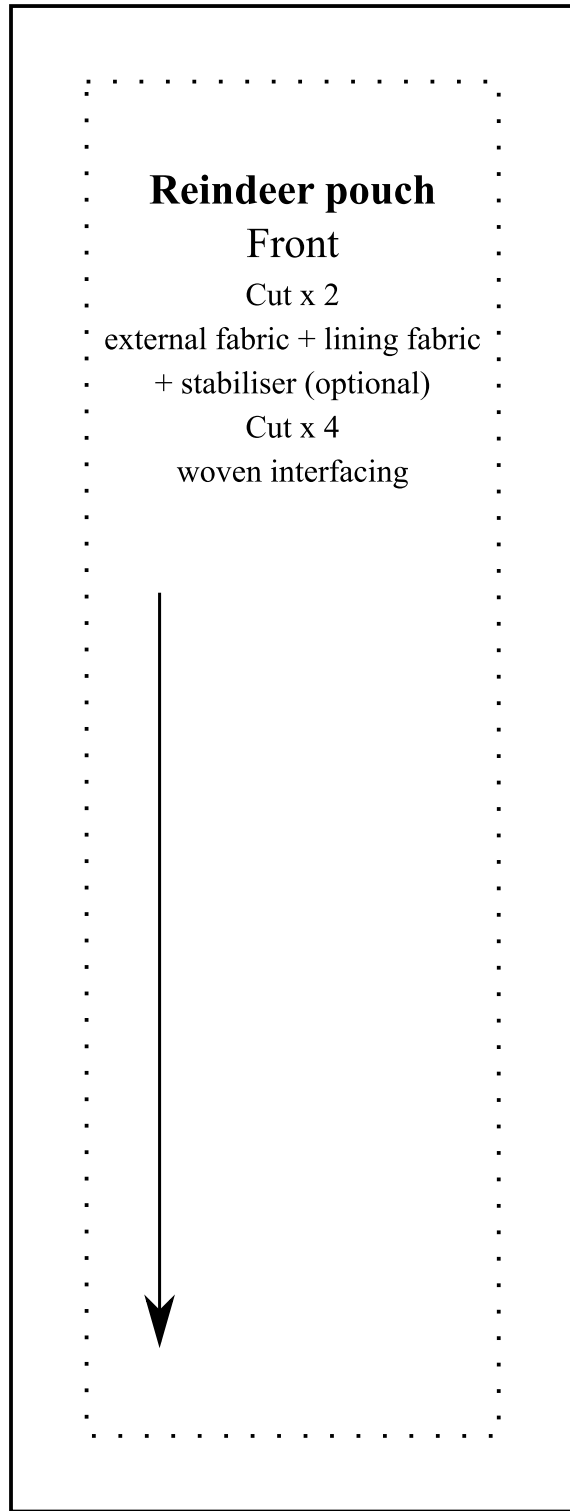
Front

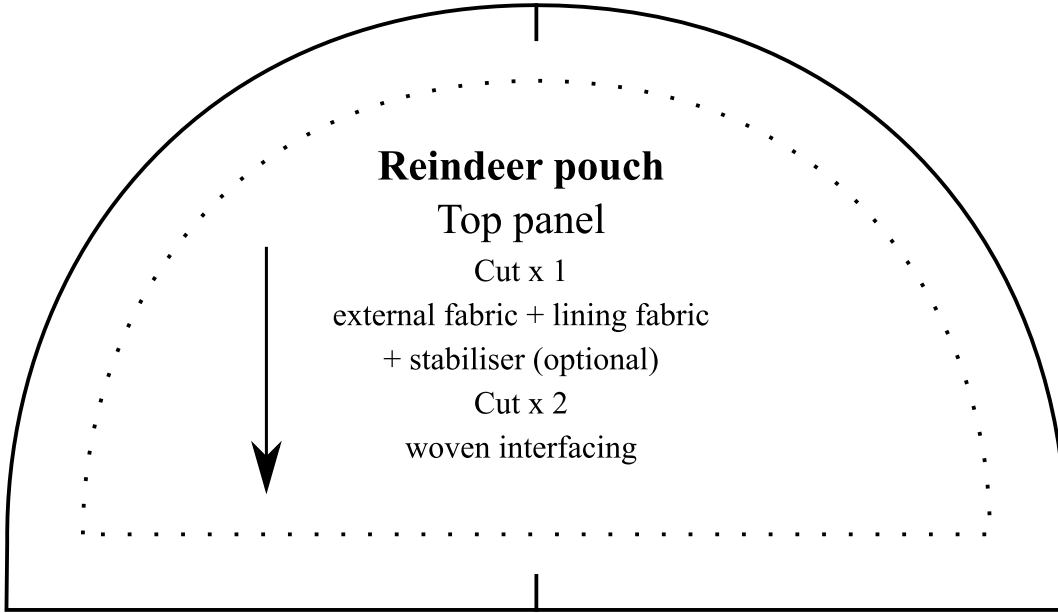
Cut x 2

external fabric + lining fabric  
+ stabiliser (optional)

Cut x 4

woven interfacing



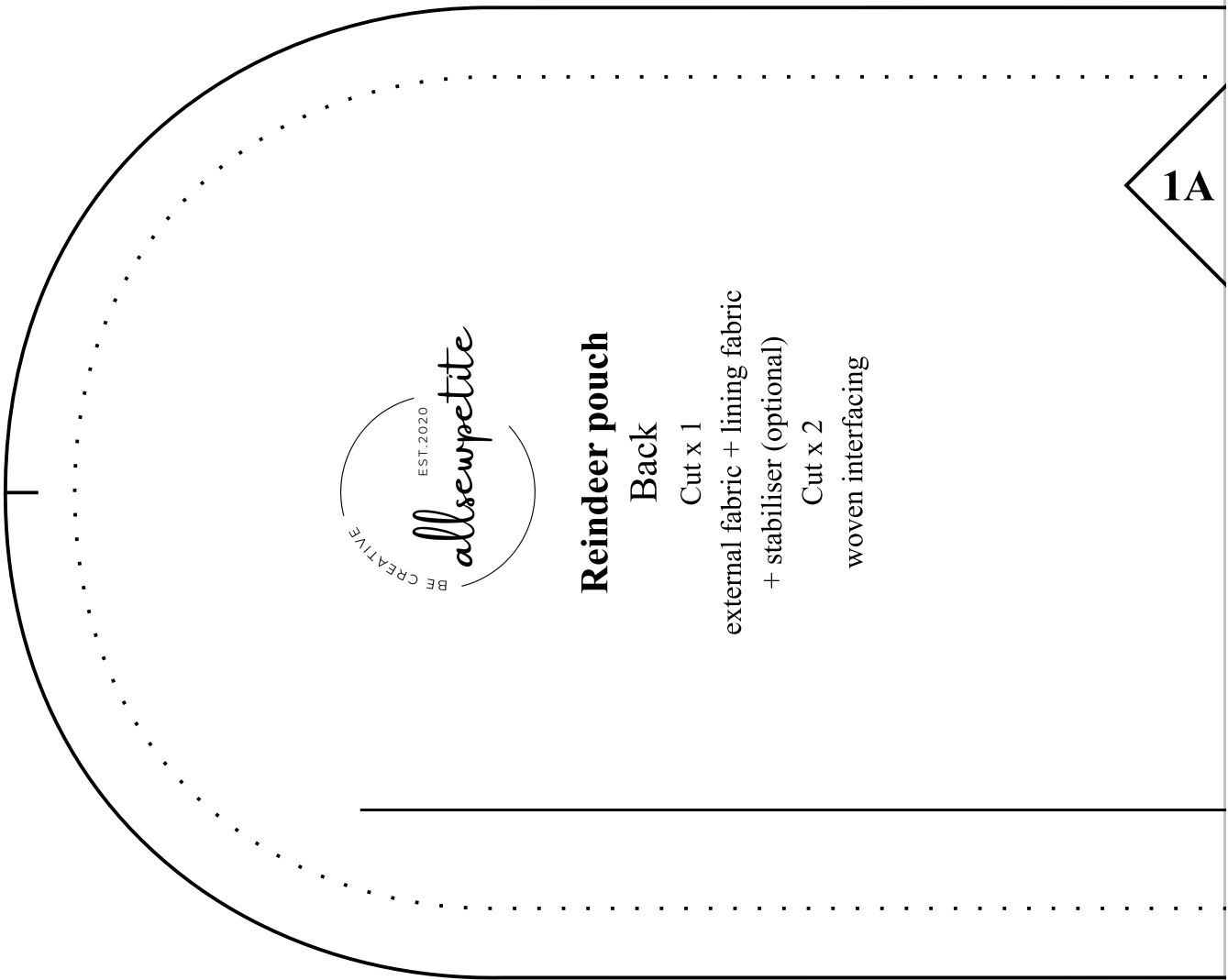


**Reindeer pouch**

**Top panel**

Cut x 1  
external fabric + lining fabric  
+ stabiliser (optional)

Cut x 2  
woven interfacing



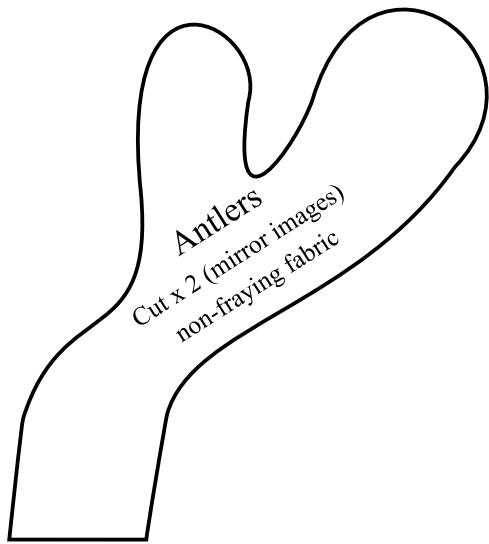
**Reindeer pouch**

**Back**

Cut x 1  
external fabric + lining fabric  
+ stabiliser (optional)

Cut x 2  
woven interfacing

**1A**



Nose  
Cut x 1  
non-fraying fabric



Eye  
Cut x 2  
non-fraying fabric

